

PV-substrate/module carts & auto-loaders

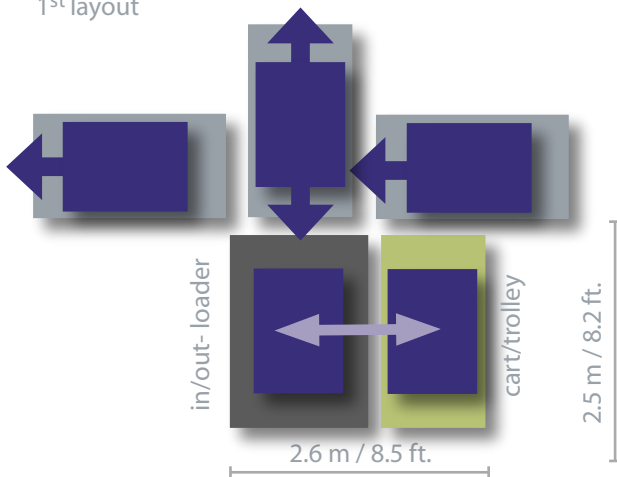
clean room quality buffer
controlled conditioning
FiLo- or FiFo-loader

Product performance

- loading or unloading time:
≤ 30 sec. with up to 50 spaces
- cell setup:
min. footprint of 2.5x2.6 m [8.2x8.5 ft.] (auto-loader incl. docked cart)
configurations for different substrate/module sizes
inline or terminus installation
- cart covers for clean room quality buffering
optional controlled conditioning: rinsing with dry air or other agents
- features:
individual auto-loader control
self-guarding, docked cart closes safety circuit
DMC-scanner for product tracking available
optional RFID scriber/reader integration

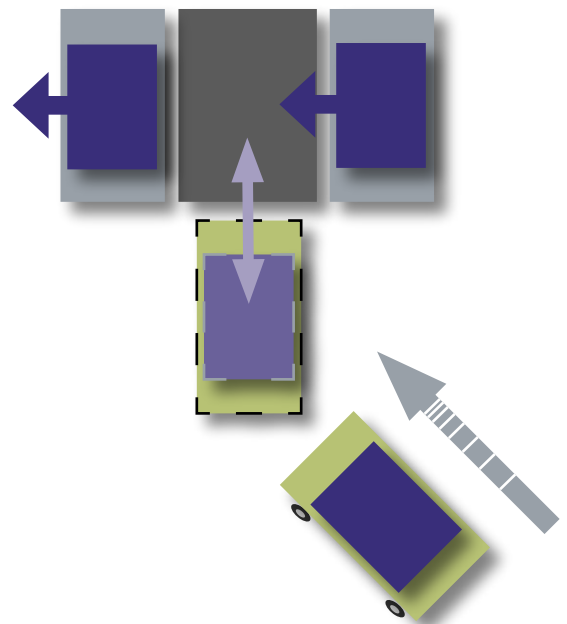
Exemplary layouts

1st layout



smooth integration with short-side or long-side docking
in/out-handshake with module line (sub-sections)
in/out-handshake, and buffer unit for no-go modules

3rd layout



2nd layout

